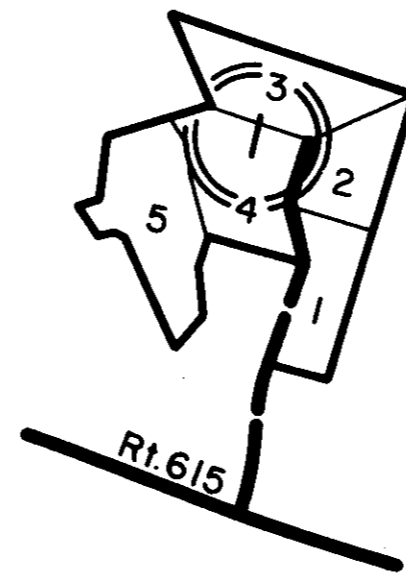
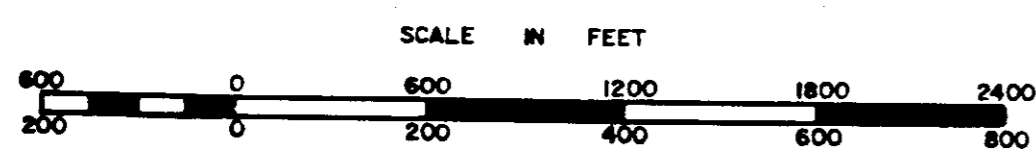


ESSEX COUNTY



EXTENSION OF LILES MOBLE HOME PARK - D.B. 190, Pg. 722



VIRGINIA STATE DEPARTMENT OF TAXATION, DIVISION OF REAL ESTATE APPRAISAL AND MAPPING

RAPPAHANNOCK DISTRICT

SECTION _____
INSERT 44A