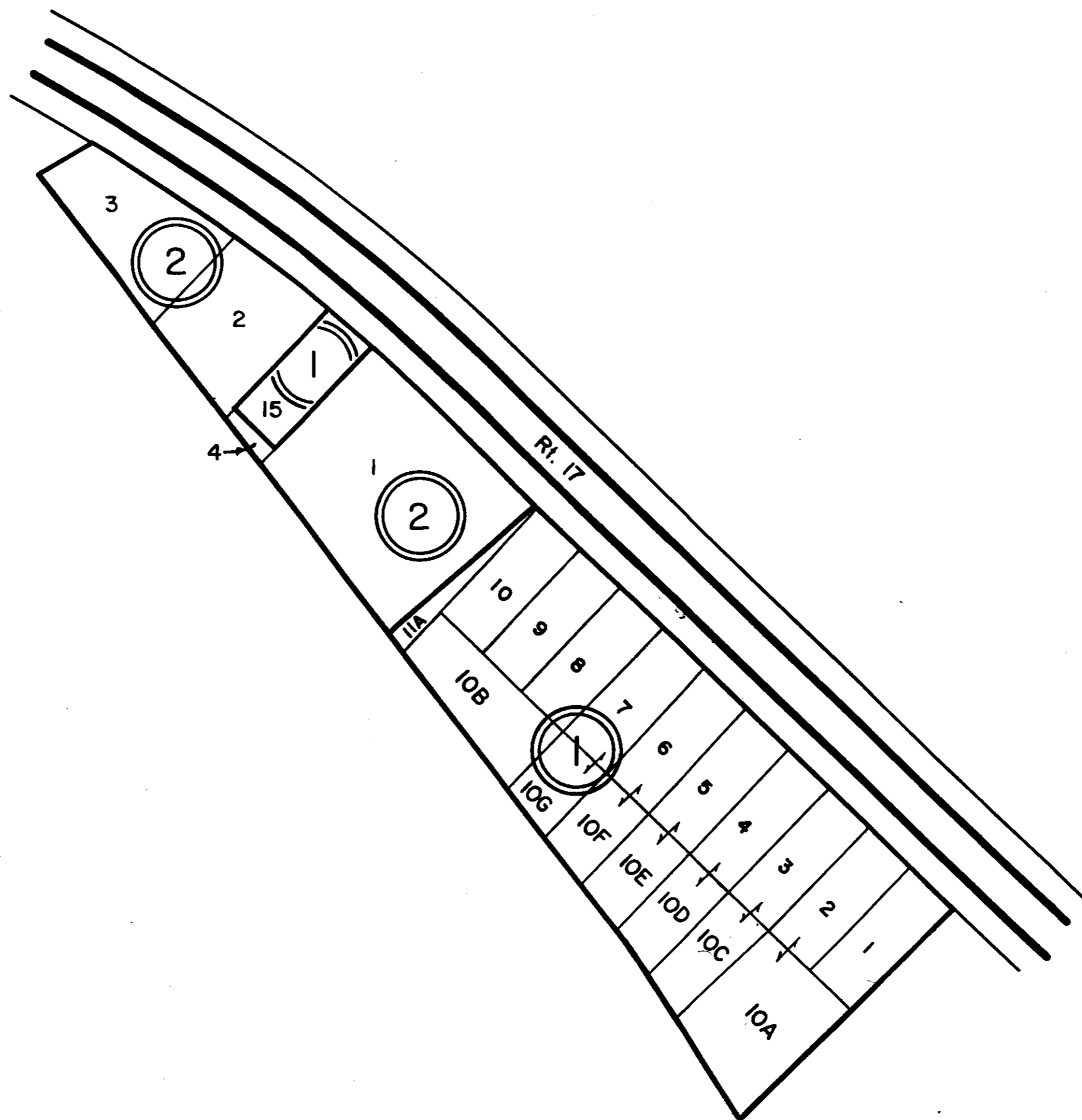


ESSEX COUNTY



- ① J.P. TALIAFERRO SUBDIVISION - P.B. 5 , Pg. 53
- ② JOHN S. WILLIASON SUB. D.B. 207, Pg. 57

REV. - 65, 1/66, 1/82, 7/95, 12/00, 12/05
SCALE IN FEET



OCCUPANCY _____ DISTRICT _____

SECTION _____
INSERT 26B